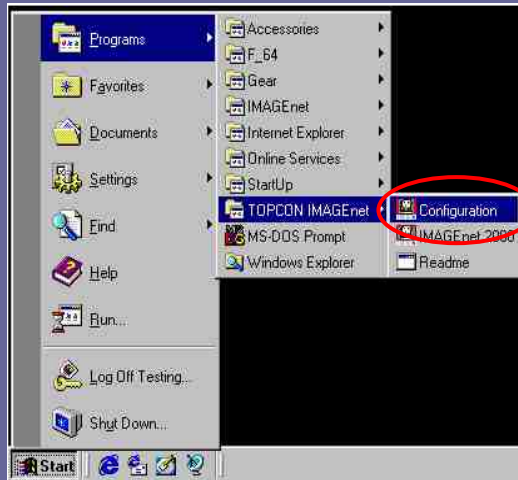


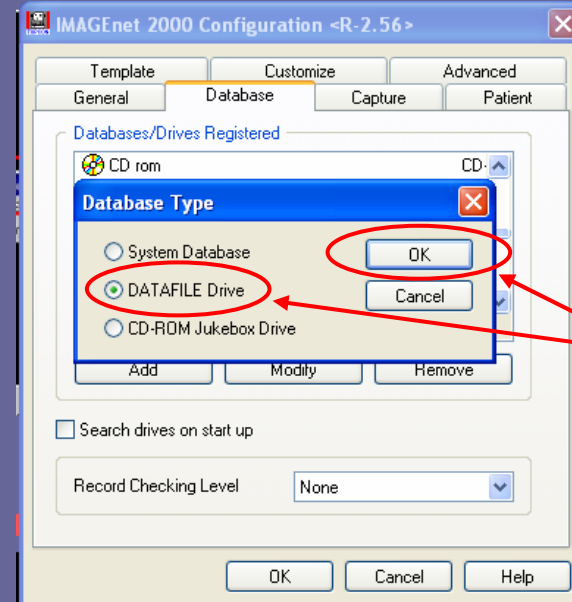
# Setting up a 'STUDY' drive



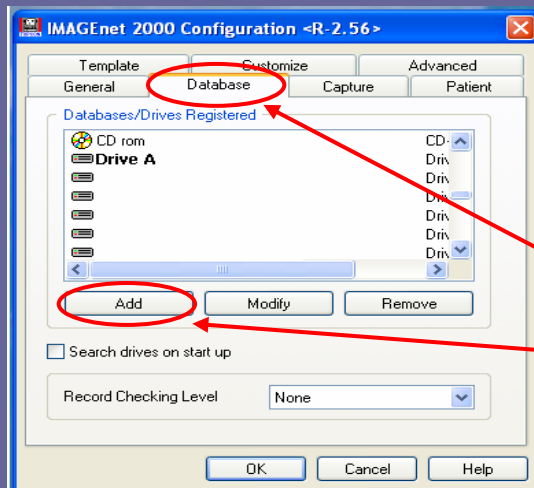
#1- Create a folder on the hard drive (local disc) and rename it 'Study'



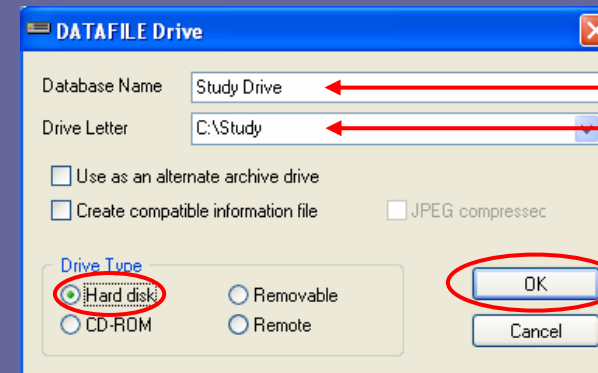
#2- Select 'Configuration'



#5- Select DATAFILE Drive, then click 'OK'



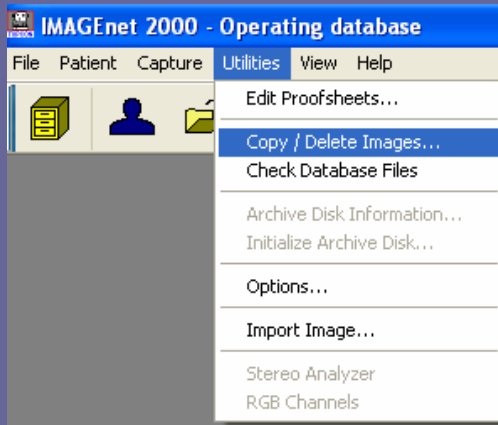
#3- Select the 'Database' tab  
#4- Click 'Add'



#6- Complete the Database Name and Drive Letter information

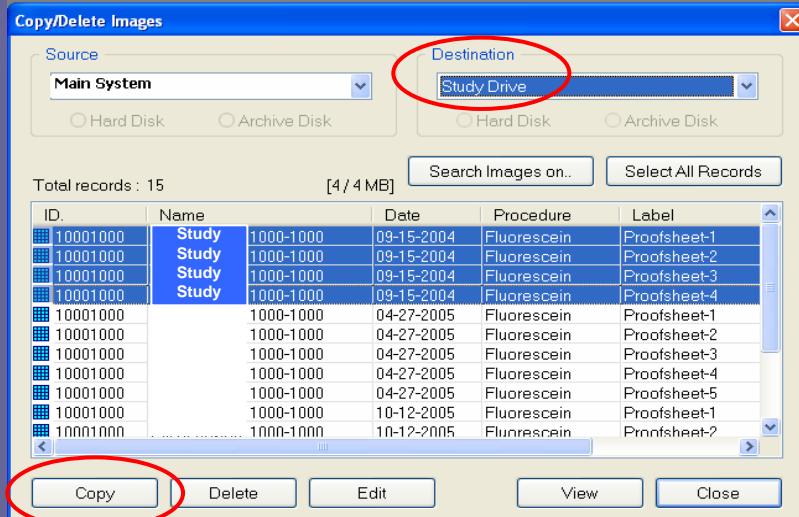
#7- Select the Drive Type as 'Hard Disc' and click 'OK'

# Creating a CD

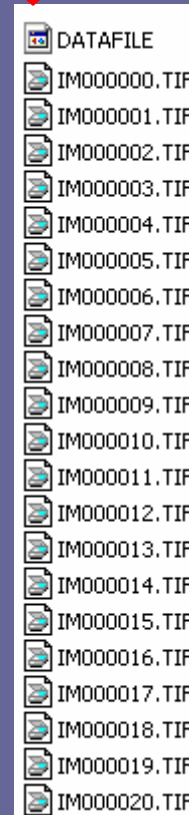


#1- In IMAGEnet select **Utilities** and **Copy/Delete Images**

#2- Make sure that the **'Study Drive'** folder is empty before copying images into it, then select the visit that you are placing on the CD and **copy** it into the **'Study Drive'** folder



#3- Close IMAGEnet and open the **'Study'** folder on the **Local Disc** (hard drive).



#4- Copy the contents of the **'Study'** folder onto the CD. To copy the images to CD you may need to use a CD burning program. (Do not copy the actual folder.)

#5- Once the CD is successfully copied, the contents of the **'Study'** folder should be emptied.